



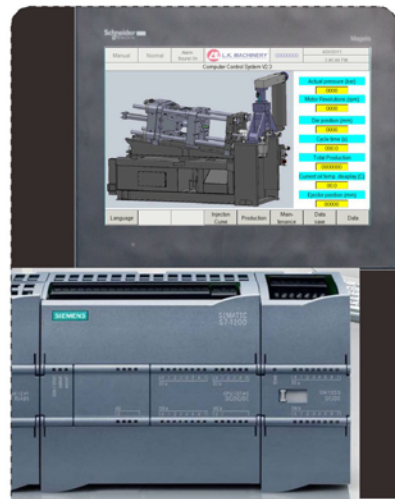
# **AVIS-II**

**HOT CHAMBER DIE CASTING MACHINE**

# AVIS-II series

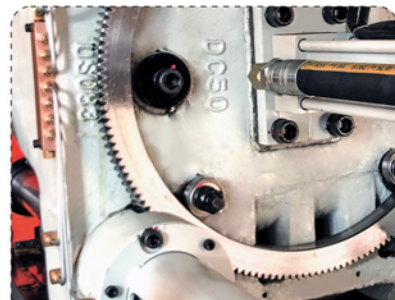
## HOT CHAMBER DIE CASTING MACHINE

The first AVIS hot chamber die casting machine was produced in 1994 representing high quality, professional and high efficiency die casting. AVIS-II has more high standard features with latest technology, which are able to fulfill high requirements on die casting industry nowadays. Thousands of AVIS and AVIS-II machines are now serving different customers worldwide and AVIS-II will be a partner for success.



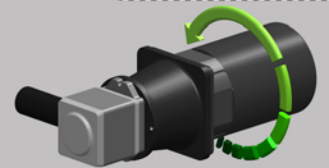
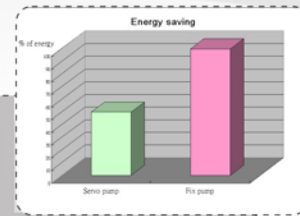
### Control System

Advanced PLC with large size touch LCD ensures reliable and easy operation.



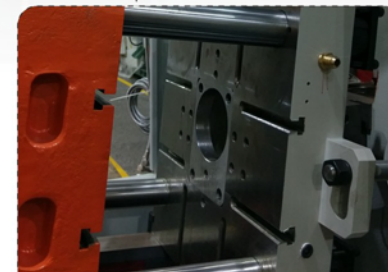
### Strong Casting Platen

with gear type hydraulic driven die height adjust mechanism, makes clamping unit durable and remarkable for die-casting.



### Energy Saving Servo Pump

Advanced servo technology in pump system provides up to 50% energy saving.



### Multi shot-position

Offers more flexibility for die design and production, fits nowadays production model.



### Centralized automatic toggle lubrication system

Ensures fixed volume of lubricant is delivered to each toggle moving joint, result in a long working life and reduce maintenance.



### Professional Injection system

Equips with piston type accumulator and proportional injection control, the injection can achieve 5 m/s or above with two stage speed control and easy injection setting.

### Standard features

- Safety doors
- Hydraulic ejector
- Hydraulic nozzle engagement
- Electrical heating nozzle, gooseneck
- Electrical heating furnace





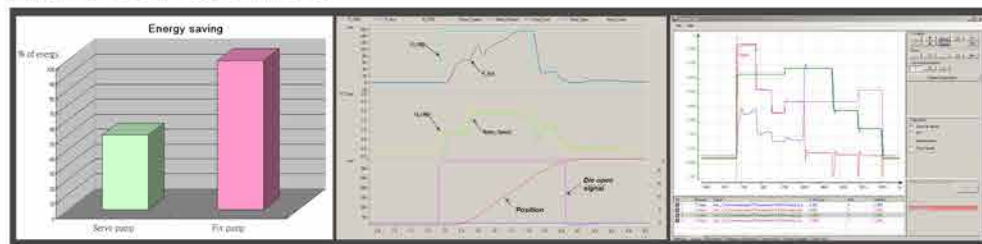
## Operation is more easy and more user-friendly

The AVIS-II has equipped with 10" touch LCD, allow operator to work more easy, and lots of data are available on the screen which are required by nowadays high requirement production and process control.



## Excellent hydraulic system with proportional pressure and flow control for best performance

### ENERGY SAVING

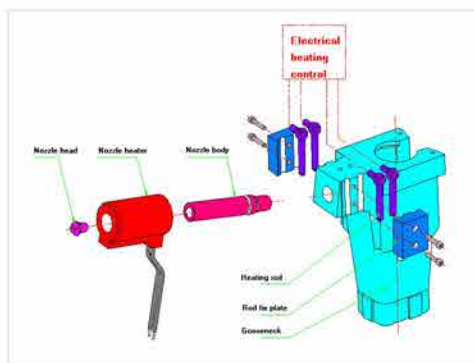


Thanks to the advanced servo technology, the new servo pump system is more reliable with good performance, saving up to 50% energy. It contributes to less production cost as well as more environmental friendly.



High efficient tubular type heat exchanger is equipped on the AVIS-II can avoid blockage of cooling water channels and hence reduce maintenance.

### PROFESSIONAL



Professional injection system with electrical heating nozzle and gooseneck ensures quality castings and long working life.



Fix spraying nozzles (Option) are effective tool for good casting.



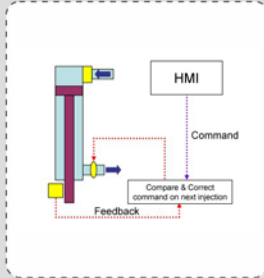
ITEM	CLASSIC-III	AVIS-II
Control	7" LCD	10" LCD
Gear type die height adjustment	Standard	Standard
Hydraulic ejector	Standard	Standard
Hydraulic nozzle engaging	Standard	Standard
Piston type accumulator	Standard	Standard
Accumulator charging pressure setting	Analogue	Analogue
Die opening stroke control	Analogue	Analogue
Pump	Fixed Pump	Energy Saving Servo Pump
Fixed spraying nozzle	Option	Option
Standard furnace	Diesel Furnace	Elec. Furnace
Core pulling	Std for DC130 or above	Std for DC50 or above
Pneumatic Sweeper	Option	Option
Injection Speed control	Hand wheel	Proportional Control
Injection curve display	Option	Standard



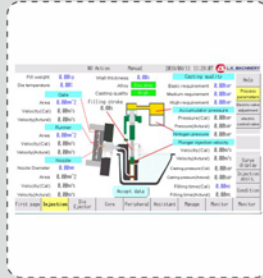
# OPTIONS



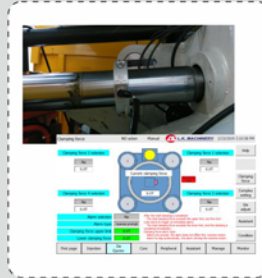
Professional HMI Siemens 9" or 12" Touch LCD and SPC function



LK Smart Injection Control System



Smart Process Assistance



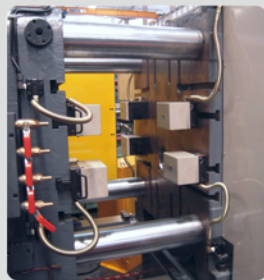
Clamping force display



Air Conditioner for the control cabinet



Pneumatic Sweeper for casting removal



Quick Die Change System



Gas or Diesel heating furnace replace electrical furnace



Furnace safety guard

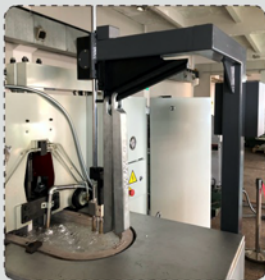
## US CE

U.S./CE Standards

- Extra Core pull
- Auto Safety door
- Smart Die Height Adjustment
- Separate plate for furnace
- Double chamber furnace
- LK Net System

Additional Options

# PERIPHERALS



Automatic Ingot loader



Automatic Extractor



Automatic Servo Linear extractor with sprayer



Automatic Servo Linear Sprayer



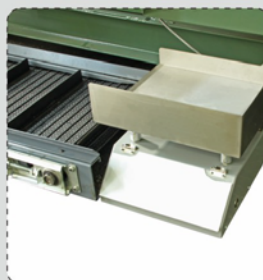
Hydraulic Trim Press (Able to interface with Robot Arm)



Automatic Portering system (central furnace)



Conveyor



Electrical casting scale



6-Axis extracting robot with gripper



Auto Die Lubricant Dilutor